



HEinnovate workshop for European Universities alliances

May 21, 2025



Agenda

15.00 – 15.10: **Welcome and opening**

15.10 – 15.30: **Introduction of HEInnovate self-assessment tool and resources**

15.30 – 15.45: **User story: HEInnovate at U!REKA European University**

15.45 – 16.00: **Q&A and plenary**

16.00 – 16.30: **Breakout sessions**

16.30 – 16.45: **Plenary: summarising breakout session results**

16.45 – 17.00: **Wrap-up and closing remarks**

Have you ever used HEInnovate?

Go to

www.menti.com

Enter the code

5710 8852



Or use QR code



Introduction

Key facts and figures

Alignment with EU/Union of Skills priorities:

- Future-proof skills: Digital, Green, Entrepreneurial
- Inclusive & sustainable education
- Stronger education-industry collaboration

HEInnovate Milestones (2024):

- 34,000+ platform users
- 80+ case studies
- Action card training tools
- Strategic role in EU policy & EIT HEI Initiative

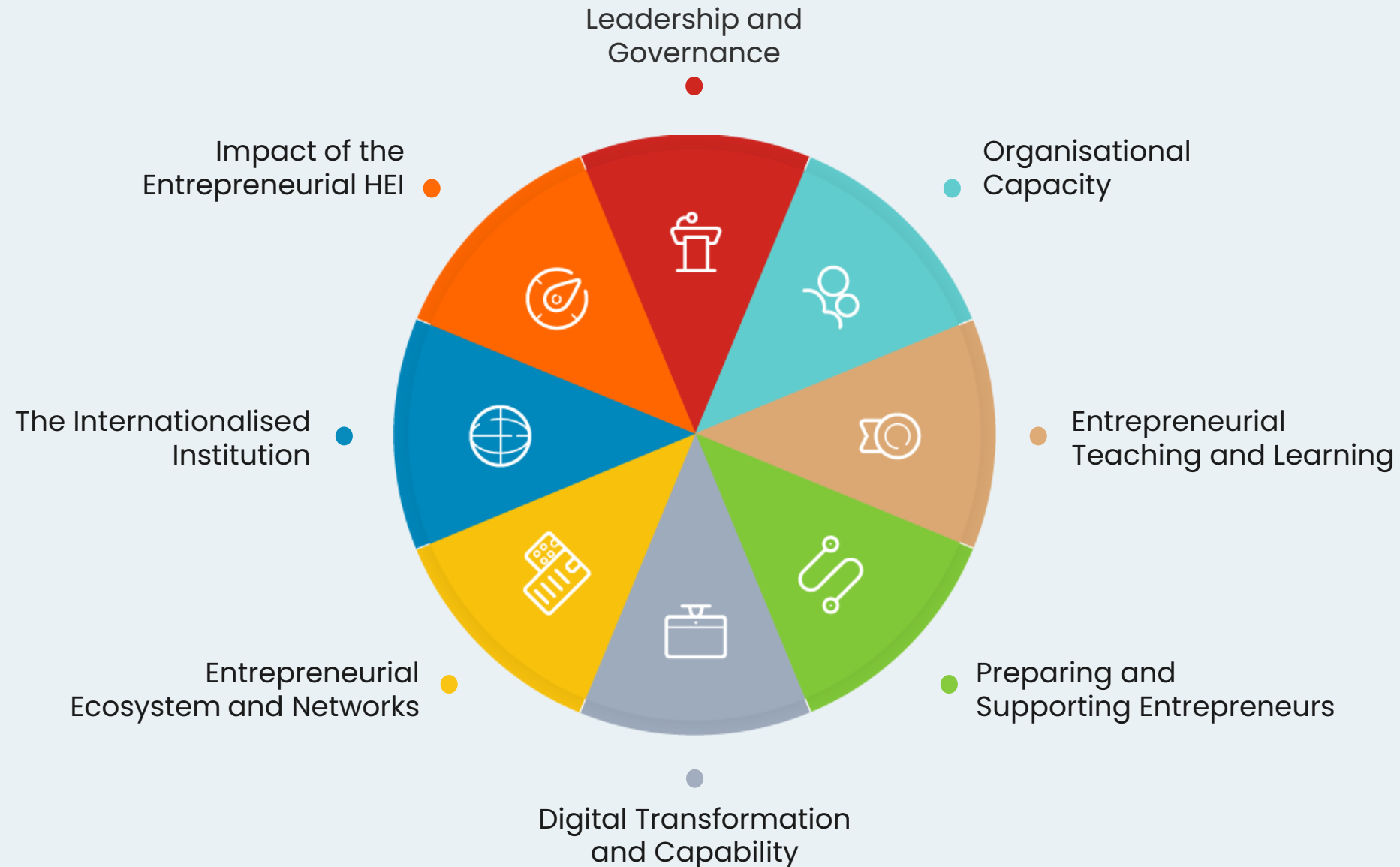
About HEInnovate

- A **free** self-assessment **tool** for higher education institutions to evaluate their **entrepreneurial** and **innovative** capacity
- Developed by the **European Commission** in partnership with the **OECD**
- Higher education institutions assess themselves in **key areas, rating statements** on a scale from 1 to 5
- Assessments can be conducted individually or as a group

Key benefits:

- Helps institutions **identify strengths** and **areas for development**
- Supports **continuous improvement** through **training, case studies, and action guides**
- Enables **internal** and **historical comparisons** but **not** a **benchmarking** tool

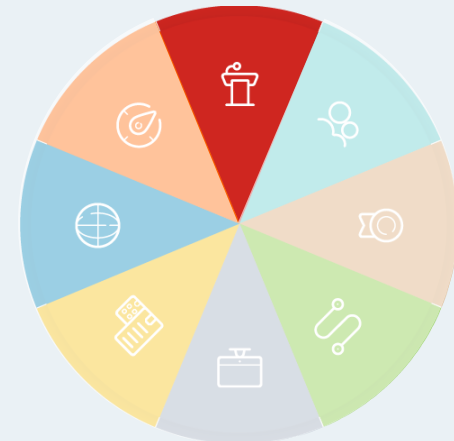
The 8 dimensions of HEInnovate





Leadership & Governance

- Prioritises entrepreneurship and innovation in the **institution's strategy**.
- Ensures **leadership commitment** to fostering an entrepreneurial culture.
- Establishes **accountable governance structures** to support innovation.





Organisational Capacity: People, Resources, Incentives and Rewards

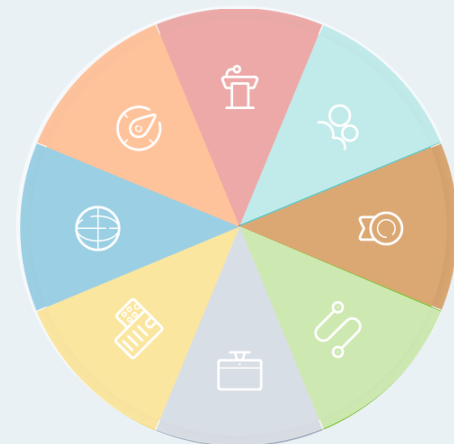
- Allocates necessary **resources and funding** for entrepreneurial initiatives.
- Develops **staff skills and expertise** to drive innovation.
- Implements **incentive systems** to encourage entrepreneurial activities.





Entrepreneurial Teaching and Learning

- Integrates entrepreneurship into **curricula across disciplines**.
- Utilises **interactive and experiential learning methods**.
- Promotes development of **entrepreneurial mindsets and skills** among students.





Preparing and Supporting Entrepreneurs

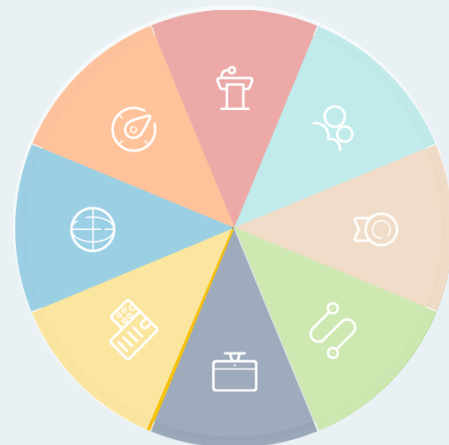
- Offers **mentorship and guidance** for startup development.
- Provides access to **incubators, accelerators, and funding opportunities.**
- Facilitates **networking** with industry experts and entrepreneurs.





Digital Transformation and Capacity

- Integrates **digital technologies** into teaching, research, and operations.
- Enhances **digital skills** among staff and students.
- Utilizes **digital tools** to foster innovation and entrepreneurial activities.





Entrepreneurial Ecosystem & Networks

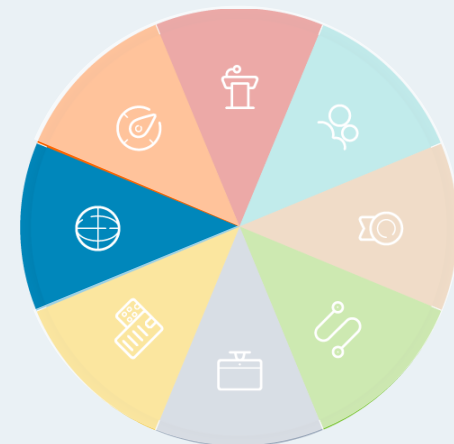
- Builds partnerships with **businesses, government, and community organisations.**
- Engages in **knowledge exchange** and **collaborative projects.**
- Contributes to **regional and local economic development.**





The Internationalised Institution

- Encourages **international collaborations** and partnerships.
- Attracts a diverse body of **international students and staff**.
- Integrates **global perspectives** into curricula and research.



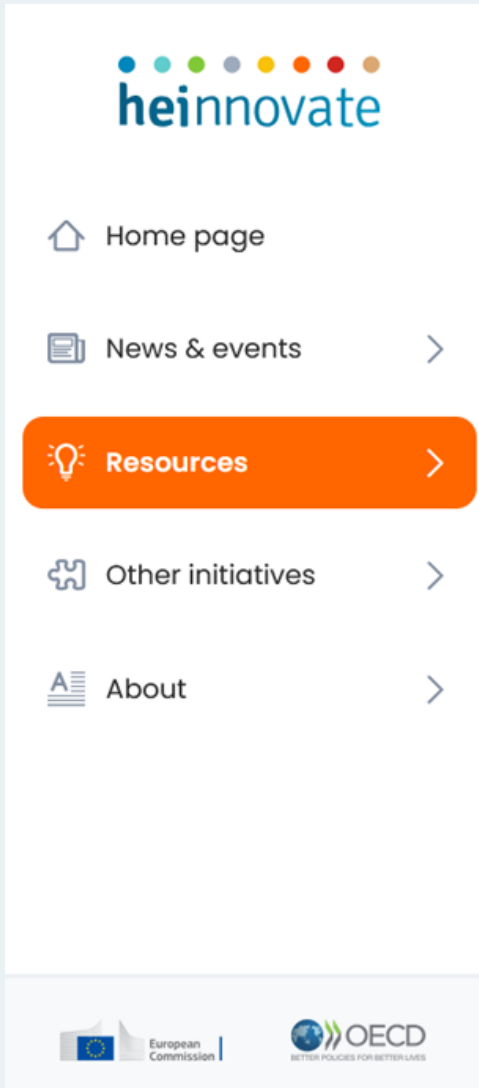


Impact of the Entrepreneurial HEI

- Regularly **evaluates the outcomes** of entrepreneurial and innovative activities.
- Uses assessment results to **inform strategic decisions**.
- **Communicates** achievements and impact to **stakeholders**.



HEInnovate Resources



- **Guidance Notes** explain each of the self-assessment statements.
- **Country Reviews** analyse the entrepreneurial landscape of higher education within various countries (until 2021).
- **Training Materials** to facilitate workshop organisation: manuals, guides, presentations, action sheets. In multiple languages, to help integrate HEInnovate results into institutional practices and strategies.
- **Case studies** showcase institutional approaches and best practices across HEInnovate dimensions.
- **Testimonials** highlight experiences of HEInnovate users.

Action Cards

- **Customised recommendations** based on your institution's **entrepreneurial profile** (7 stages from Aspirant to Guru)
- Profiles are defined based on self-assessment scores across the 8 HEInnovate dimensions.
- Practical, evidence-based **guidance** drawing recommendations from case studies and expert interviews

Leadership and Governance

Advanced





Entrepreneurship Board or Council

Actions & Formats	Timespan
Form an entrepreneurship council that brings together local key stakeholders.	Medium-term
Create an entrepreneurship board to challenge and mentor your organisation. Include internal decision-makers and external stakeholders on the board.	Medium-term
Set up a scientific council of advisors to advance your entrepreneurship research agenda.	Long-term

1/04

Leadership and Governance

Advanced



Entrepreneurship Board or Council

Regular checks by external stakeholders and experts can provide necessary feedback to craft a realistic yet ambitious entrepreneurship strategy for your HEI. An entrepreneurship board or council can provide non-binding strategic advice to your HEI, interest group or department.

An internal entrepreneurship board could comprise relevant stakeholders, such as vice-presidents, rectors and deans who provide context-specific counsel and help with supporting new initiatives. An external board may consist of national and international entrepreneurship experts who can provide strategic insights into current developments within the field.

A regional entrepreneurship council made up of local industry representatives, politicians and other relevant stakeholders can help connect your activities to the existing local entrepreneurial ecosystem.

If you are part of a research-driven HEI, setting up a scientific council may provide valuable guidance on strengthening your international research profile.

Applicable Profiles

1

2

3

4

5

6

7

4 Internal Performer, **5** Regional Performer, **6** International Performer, **7** Guru

1/04

In which of the 8 HEInnovate dimensions your institution needs to improve the most? (select up to 3)

Go to

www.menti.com

Enter the code

5710 8852



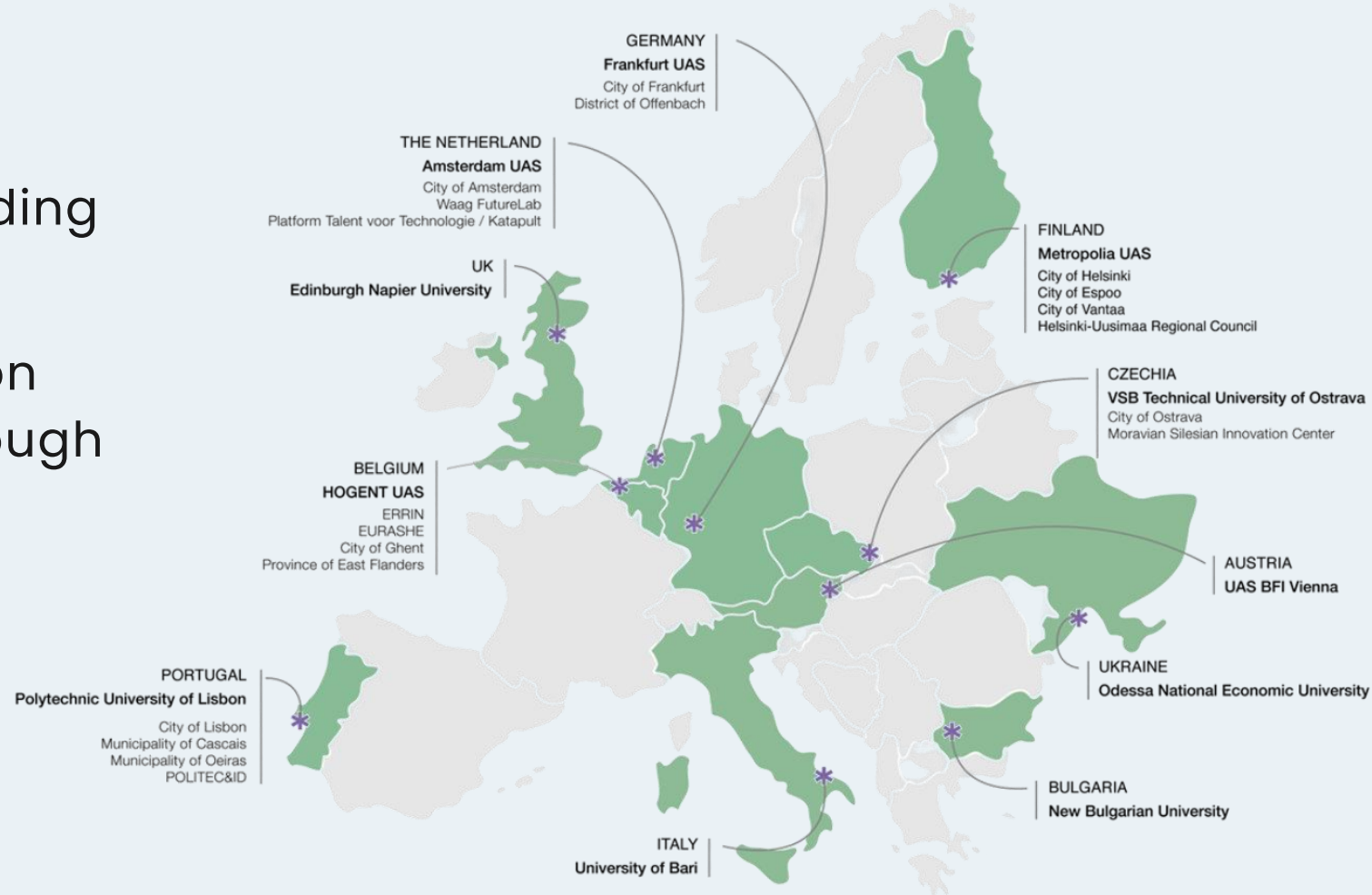
Or use QR code



User story:
HEInnovate at U!REKA European
University

About U!REKA

- Alliance founded in 2016
- U!REKA SHIFT Erasmus+ EUI funding since 2024
- Focus on accelerating transition to Climate-Neutral Europe through joint research, innovation and education



Innovation and Entrepreneurship in U!REKA European University

- Sharing best practices in entrepreneurship education and incubator activities among alliance members in order to proceed towards a joint U!REKA incubator
- The organisation of 6 multidisciplinary hackathons for student teams to innovate new solutions for climate-neutrality challenges
- To develop 500 solutions for climate-neutrality challenges through U!REKA research, innovation and education activities



The use of HEInnovate tool in U!REKA

	Leadership and Governance	Organisational Capacity: People, Resources, Incentives and Rewards	Entrepreneurial Teaching and Learning	Preparing and Supporting Entrepreneurs	Digital Transformation and Capability	Entrepreneurial Ecosystem and Networks	The internationalised institution	Impact of the Entrepreneurial HEI
Partner A	2.8	1.2	2.2	2.0	1.8	3.0	2.4	3.0
Partner B	4.2	4.0	3.8	4.2	3.4	4.3	3.8	4.5
Partner C	2.6	2.0	2.6	3.0	1.6	3.3	2.4	1.0
Partner D	4.4	4.3	3.2	3.6	3.6	4.3	4.2	3.7
Partner E	3.1	1.6	3.8	2.8	3.4	3.3	3.8	2.6
Partner F	2.8	2.2	2.8	2.6	2.1	3.0	2.7	2.2
Partner G	4.2	3.4	4.8	4.6	3.0	4.5	3.4	2.8
AVE	3.4	2.7	3.3	3.3	2.7	3.7	3.2	2.8
MIN	2.6	1.2	2.2	2.0	1.6	3.0	2.4	1.0
MAX	4.4	4.3	4.8	4.6	3.6	4.5	4.2	4.5

- Each partner has assessed their innovation competences through HEInnovate Tool (see results above)
- We used the tool to **identify our strenghts** -> Entrepreneurial Ecosystem and Networks (3.7) and Leadership & Governance (3.4), and to leverage them.
- We used the tool to **identify our weaknesses** -> Organisational capacity (2.7), Digital transformation and capability (2.7) and Impact of Entrepreneurial HEI (2.8). We focus our competence development efforts on our weak points.
- Finally, we **learned as an alliance** from the ones that are good in each specific dimension. These partners have shared their best practices with others to investigate the possibility to transfer them to other university contexts, and thus enhance the alliance competences as a whole.

The impact of HEInnovate tool

	Leadership and Governance	Organisational Capacity: People, Resources, Incentives and Rewards	Entrepreneurial Teaching and Learning	Preparing and Supporting Entrepreneurs	Digital Transformation and Capability	Entrepreneurial Ecosystem and Networks	The internationalised institution	Impact of the Entrepreneurial HEI
Partner A	2.8	1.2	2.2	2.0	1.8	3.0	2.4	3.0
Partner B	4.2	4.0	3.8	4.2	3.4	4.3	3.8	4.5
Partner C	2.6	2.0	2.6	3.0	1.6	3.3	2.4	1.0
Partner D	4.4	4.3	3.2	3.6	3.6	4.3	4.2	3.7
Partner E	3.1	1.6	3.8	2.8	3.4	3.3	3.8	2.6
Partner F	2.8	2.2	2.8	2.6	2.1	3.0	2.7	2.2
Partner G	4.2	3.4	4.8	4.6	3.0	4.5	3.4	2.8
AVE	3.4	2.7	3.3	3.3	2.7	3.7	3.2	2.8
MIN	2.6	1.2	2.2	2.0	1.6	3.0	2.4	1.0
MAX	4.4	4.3	4.8	4.6	3.6	4.5	4.2	4.5

- We will use the tool to monitor how as an alliance we have developed our competences in each partner university by the end of the first funding period (2027), as each university will repeat the self-assessment and we will compare the results to the starting point.
- We will use the tool also to **identify the key areas to further develop** our entrepreneurial activities
- Only after we have developed our joint incubator program and entrepreneurship education, we are able to assess our alliance entrepreneurship and innovation competences as a whole

Key findings and conclusions

- HEInnovate tool was useful to **understand the starting point of our alliance**. What are the areas our universities are good at? What are the weak points?
- It also helped to **identify the development needs** and which partners can help others to develop further in the eight dimensions of the HEInnovate tool
- The tool also provides value to **monitor the progress of the alliance** and its individual partners in developing the entrepreneurial and innovation activities
- It is still important to understand the possible **cultural differences** in performing self-assessment, even when the questions are the same, some partners are more self-critical than others. This does not dilute the results, but it is good to bear in mind when analysing the results. After all, the tool will demonstrate the strengths and weaknesses of each partner, but I would not compare the values between partners directly.

Q&A

Breakout sessions

You will be divided into four breakout rooms, each focusing on two HEInnovate dimensions:

- **Room 1:** Leadership and Governance & Organisational Capacity: People, Resources, Incentives and Rewards
- **Room 2:** Entrepreneurial Teaching and Learning & Preparing and Supporting Entrepreneurs
- **Room 3:** Digital Transformation and Capacity & Entrepreneurial Ecosystem and Networks
- **Room 4:** The Internationalised Institution & Impact of the Entrepreneurial HEI

Breakout sessions

- Look at the statements of HEInnovate self-assessment tool for the respective dimensions
- Do you have examples of specific initiatives at your alliance? – Indicate using a **green post-it**
- Are the statements relevant for you as a European Universities alliance? How could they be enhanced? – Indicate using a **yellow post-it**

Plenary

- Summary of breakout room discussions
- Remaining questions and answers

Conclusion and next steps

- Reach out to us at info@heinnovate.eu if you would like to host a workshop within your alliance(s), or have a good practice to share!
- Check www.heinnovate.eu for upcoming webinars, workshops and train-the-trainers sessions.
- Look out for the HEInnovate stand at the **EAIE Annual Conference** and Exhibition in Gothenburg on 9-12 September!





Thank you for joining! If you have any further questions, please contact us at info@heinnovate.eu

